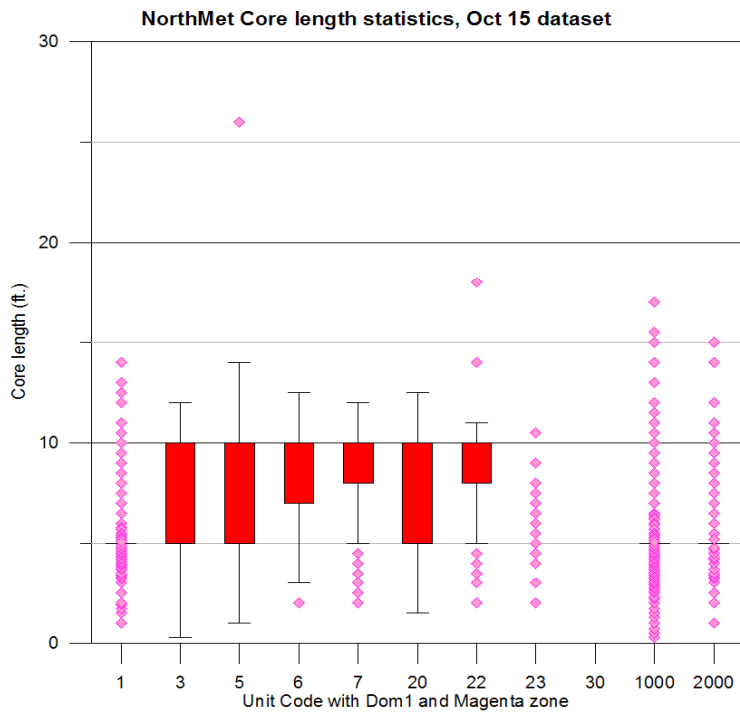




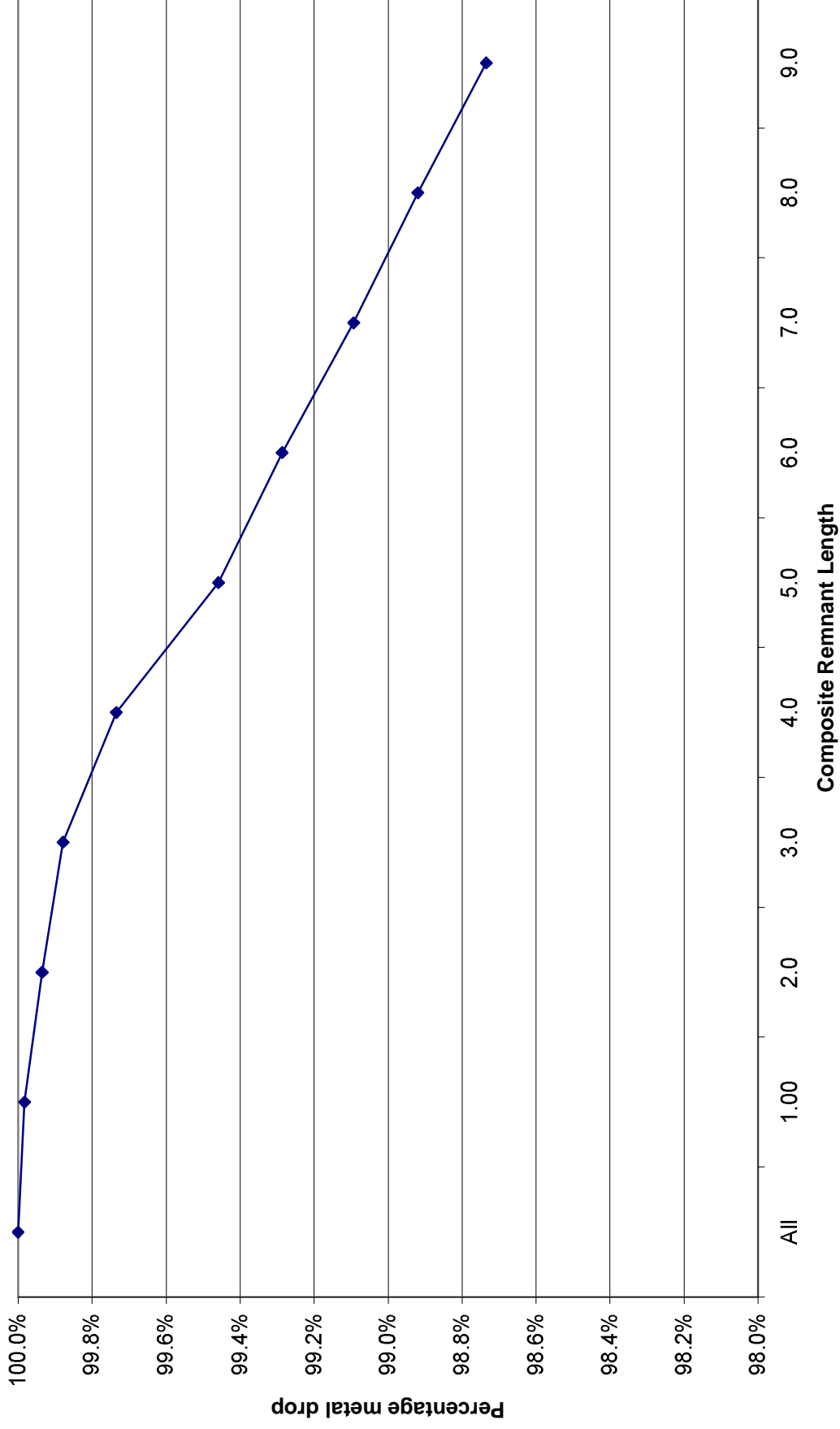
APPENDIX D

CORE LENGTH STATISTICS

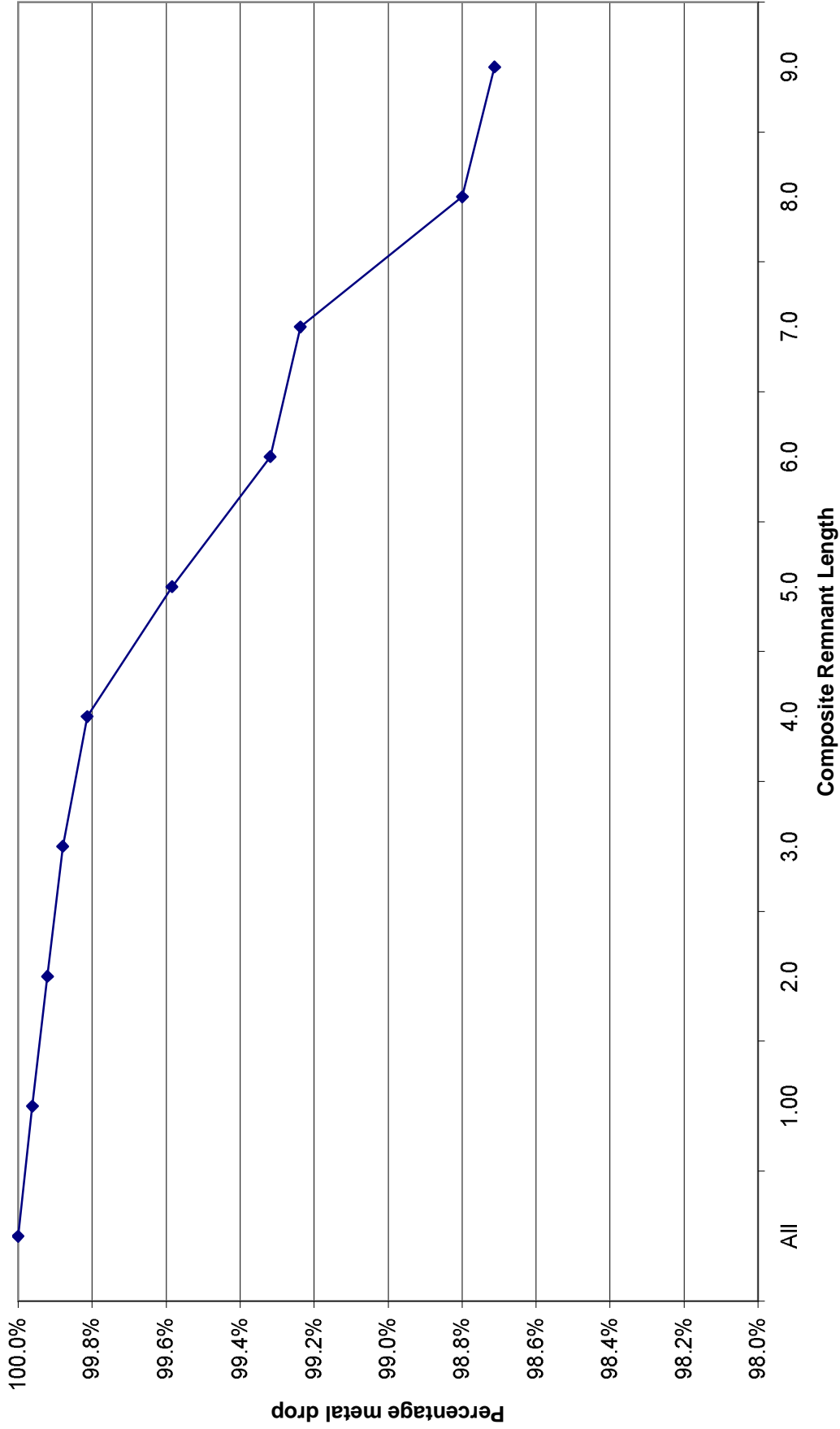
NorthMet Core length statistics sorted by Unit Code with Dom 1 and Magenta zone (October 15 dataset)											
	1	3	5	6	7	20	22	23	30	1000	2000
Number of values	4698	6857	2189	845	427	982	508	101	2	15495	1894
Sum	24,536	46,194	18,086	7,305	3,817	6,338	4,472	927	20	81,853	11,056
Minimum	1.0	0.3	1.0	2.0	2.0	1.5	2.0	2.0	10.0	0.3	1.0
Maximum	14.0	12.0	26.0	12.5	12.0	12.5	18.0	10.5	10.0	17.0	15.0
Range	13.0	11.7	25.0	10.5	10.0	11.0	16.0	8.5	-	16.7	14.0
Mean	5.2	6.7	8.3	8.6	8.9	6.5	8.8	9.2	10.0	5.3	5.8
Median	5.0	5.0	10.0	10.0	10.0	5.0	10.0	10.0	10.0	5.0	5.0
First quartile	5.0	5.0	5.0	7.0	8.0	5.0	8.0	10.0	#N/A	5.0	5.0
Third quartile	5.0	10.0	10.0	10.0	10.0	10.0	10.0	10.0	#N/A	5.0	5.0
Standard error	0.0	0.0	0.1	0.1	0.1	0.1	0.1	0.2	-	0.0	0.0
95% confidence interval	0.0	0.1	0.1	0.1	0.2	0.1	0.2	0.4	-	0.0	0.1
99% confidence interval	0.1	0.1	0.1	0.2	0.2	0.2	0.2	0.5	-	0.0	0.1
Variance	1.9	6.4	6.0	4.9	3.6	5.3	4.5	3.9	-	2.9	4.4
Average deviation	0.7	2.4	2.2	1.9	1.5	2.0	1.8	1.4	-	1.0	1.6
Standard deviation	1.4	2.5	2.5	2.2	1.9	2.3	2.1	2.0	-	1.7	2.1
Coefficient of variation	0.3	0.4	0.3	0.3	0.2	0.4	0.2	0.2	-	0.3	0.4
Skew	2.5	0.4	(0.6)	(1.1)	(1.5)	0.8	(1.0)	(2.4)	#N/A	2.0	1.3
Kurtosis	7.9	(1.6)	0.1	(0.5)	1.1	(1.0)	0.6	4.6	#N/A	4.4	0.6



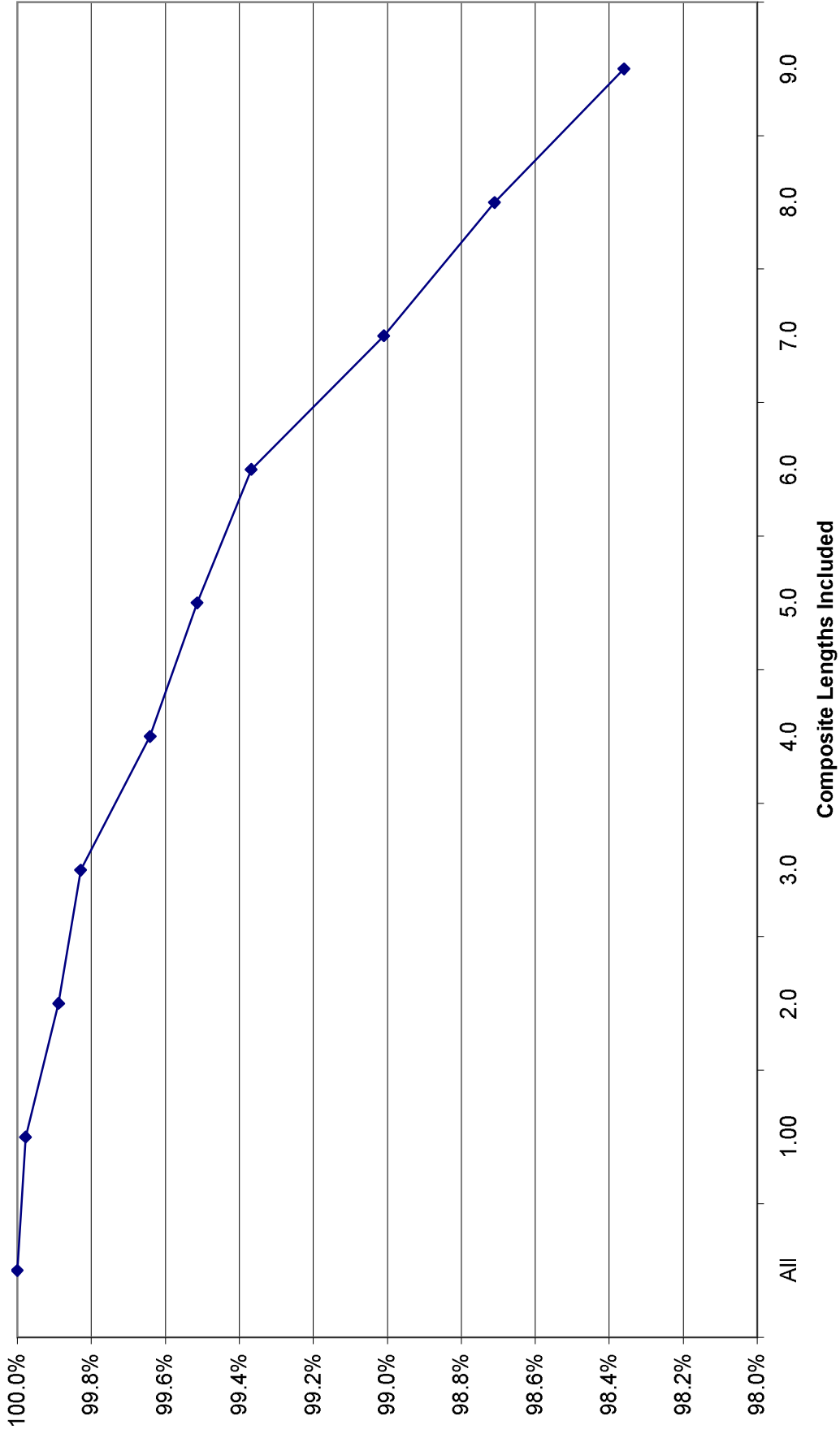
Percentage of metal in remnant - Code 1001 Top of Domain 1
10 ft Composites



**Percentage of metal in remnant - Code 2000 Magenta zone
10 ft Composites**



Percentage of metal in remnant - Code 3000
10 ft Composites



Percentage of metal in remnant - Code 3000 10 ft Composites

